

二零一一年人口普查
香港的住戶收入分布

2011 Population Census
Household Income Distribution
in Hong Kong

二零一二年六月十八日
18 June 2012



背景

BACKGROUND

- 根據2011年人口普查數據編製

《主題性報告：香港的住戶收入分布》

The Thematic report on Household Income Distribution in Hong Kong is compiled based on data from the 2011 Population Census

- 目的

Objectives

- 分析過去十年香港的整體收入分布情況

Analyse the overall income distribution in Hong Kong

- 分析政府採取的措施對收入重新分布的效應

Analyse the redistributive effects of government intervention on income



概述

OUTLINE

1. 收入分布

Income distribution

2. 政府採取的措施對收入重新分布的效應

Redistributive effects of government intervention on income

3. 收入分散的情況及影響因素

Income dispersion and intervening factors

收入分布

INCOME DISTRIBUTION

○ 個人收入

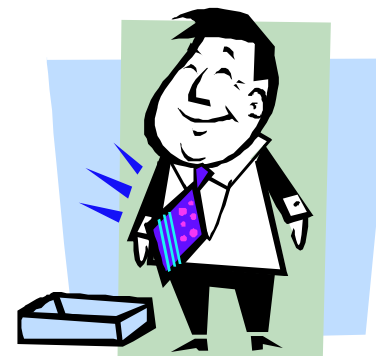
Individual income

- 職業收入: 包括工資、薪金和相關的津貼

Employment income: covers wages, salaries and related allowances

- 其他現金收入: 包括租金收入、利息、股息等

Other cash income: includes rental income, interests, dividends etc.



○ 住戶收入

Household income

- 所有住戶成員收入總和

Sum of income from all household members



家庭住戶收入來源

SOURCE OF DOMESTIC HOUSEHOLD INCOME

家庭住戶收入來源 Source of Domestic Household Income	百分比 (%)		
	2001	2006	2011
職業收入 Employment Income	88.1	86.1	85.7
其他現金收入 Other Cash Income	11.9	13.9	14.3
總計 Total	100.0	100.0	100.0

每月主要職業收入中位數

MEDIAN MONTHLY INCOME FROM MAIN EMPLOYMENT

港元
HK\$

15,000

10,000

5,000

0

\$11,000

\$10,000

\$12,000

2001

2006

2011

備註：不包括外籍家庭傭工

Note : Excluding foreign domestic helpers

年 Year	變動 Change	
	每月主要職業 收入中位數 Median monthly income from main employment	綜合消費 物價指數 Composite Consumer Price Index
2001-2011	+9.1%	+12%
2006-2011	+20.0%	+16%

每月主要職業收入中位數

MEDIAN MONTHLY INCOME FROM MAIN EMPLOYMENT

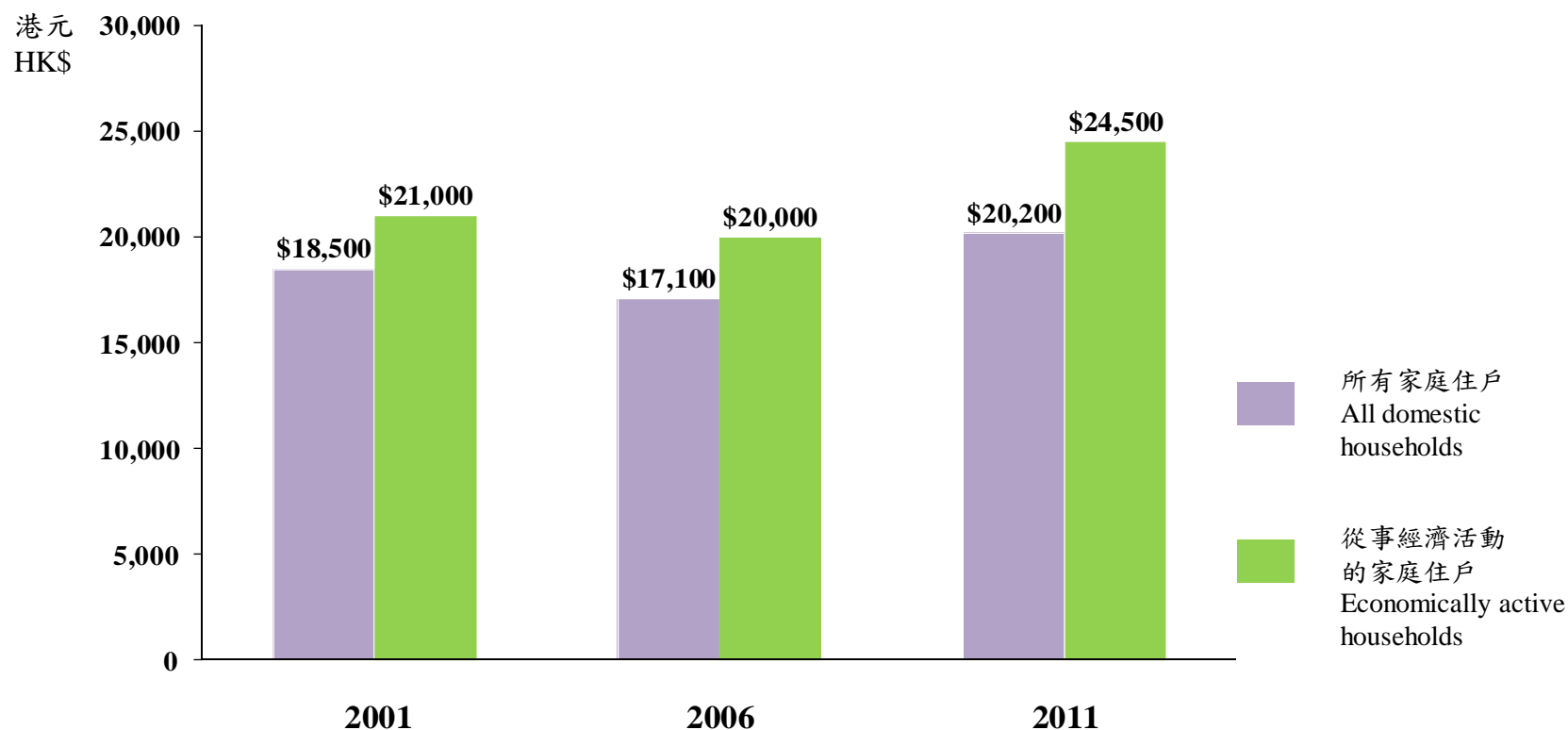
十等分組別 Decile Group	每月主要職業收入中位數 (港元) Median Monthly Income from Main Employment (HK\$)		
	以當時市價計算 At Current Prices		
	2001	2006	2011
第一 (最低) 1st (lowest)	3,500	3,000	3,580
第二 2nd	6,000	5,500	6,940
第三 3rd	7,500	7,000	8,000
第四 4th	9,000	8,000	9,900
第五 5th	10,000	10,000	11,000
第六 6th	12,000	11,000	13,500
第七 7th	15,000	14,000	16,150
第八 8th	18,500	18,000	20,000
第九 9th	25,000	25,000	30,000
第十 (最高) 10th (highest)	45,000	45,000	55,000
合計 Overall	11,000	10,000	12,000

備註：不包括外籍家庭傭工

Note : Excluding foreign domestic helpers

家庭住戶每月收入中位數

MEDIAN MONTHLY DOMESTIC HOUSEHOLD INCOME



年 Year	變動 Change		綜合消費 物價指數 Composite Consumer Price Index
	家庭住戶每月收入中位數 Median monthly domestic household income		
	所有家庭住戶 All domestic households	從事經濟活動的家庭住戶 Economically active households	
2001-2011	+9.2%	+16.7%	+12%
2006-2011	+18.1%	+22.5%	+16%

備註：不包括外籍家庭傭工
Note: Excluding foreign domestic helpers

從事經濟活動的家庭住戶每月收入中位數

MEDIAN MONTHLY DOMESTIC HOUSEHOLD INCOME OF ECONOMICALLY ACTIVE HOUSEHOLDS

十等分組別 Decile Group	以當時市價計算 At Current Prices		
	2001	2006	2011
第一 (最低) 1st (lowest)	6,000	5,500	7,000
第二 2nd	10,000	9,000	10,240
第三 3rd	12,600	12,000	14,250
第四 4th	15,830	15,000	18,000
第五 5th	19,600	18,210	22,000
第六 6th	23,000	22,000	27,000
第七 7th	28,410	27,000	33,000
第八 8th	35,000	34,000	41,400
第九 9th	47,250	45,750	57,000
第十 (最高) 10th (highest)	85,000	82,500	100,310
合計 Overall	21,000	20,000	24,500

備註：不包括外籍家庭傭工
Note: Excluding foreign domestic helpers

政府採取的措施對收入重新分布的效應

REDISTRIBUTIVE EFFECTS OF GOVERNMENT INTERVENTION ON INCOME

○ 稅務

Taxation

- 薪俸稅
Salaries tax
- 物業稅
Property tax
- 差餉及地租
Rates and
Government rent

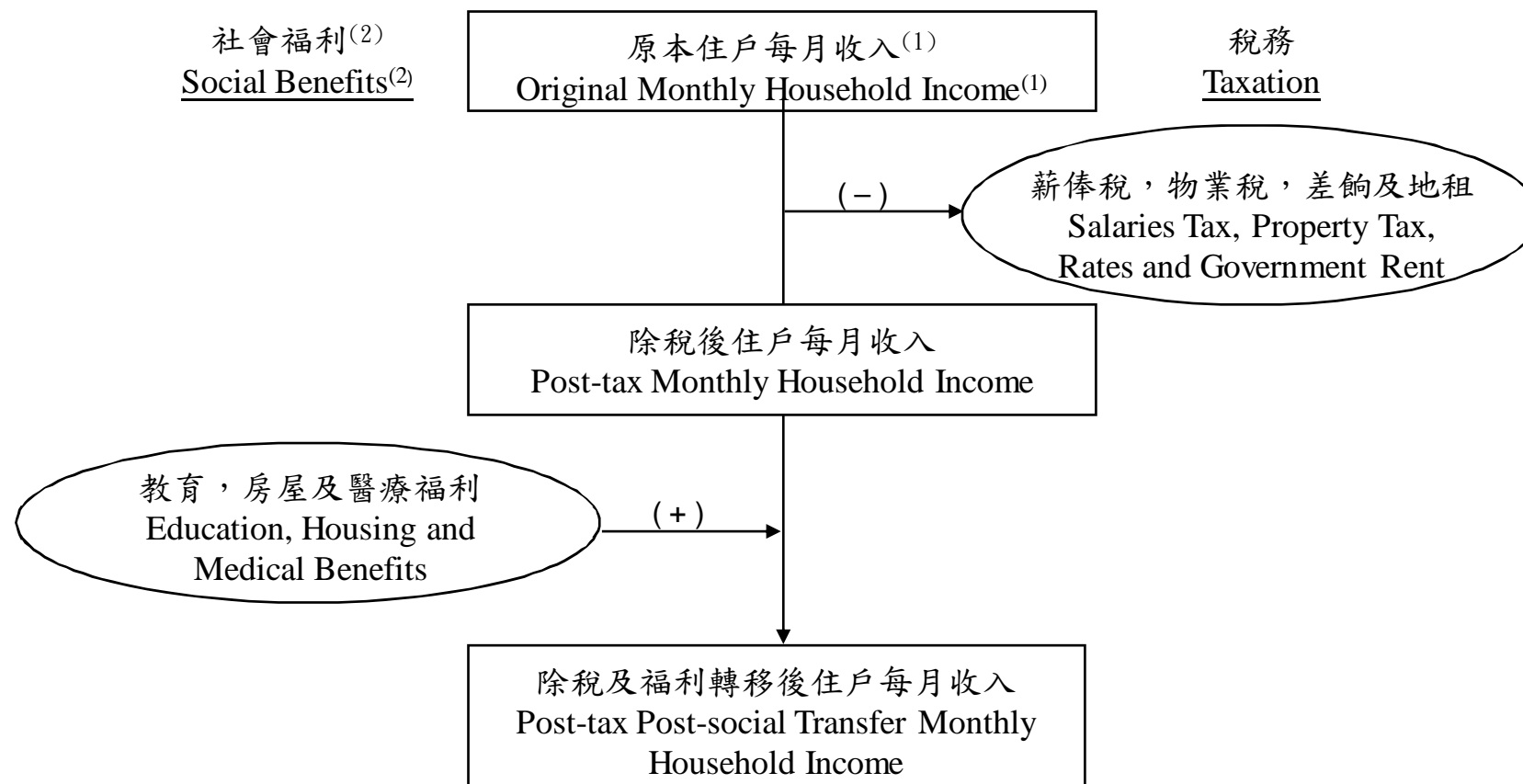
○ 社會福利

Social benefits

- 教育
Education
- 醫療
Medical
- 房屋
Housing

政府採取的措施對收入重新分布的效應

REDISTRIBUTIVE EFFECTS OF GOVERNMENT INTERVENTION ON INCOME



註釋：(1) 即家庭住戶每月收入，包括從工作得到的收入、租金收入、股息及利息、非住戶成員定期給予的款項等。

(2) 包括教育、房屋和醫療福利的實物形式的福利。

Notes: (1) Referring to monthly domestic household income which includes income from work, rental income, dividend and interest, regular contribution from persons outside the household, etc.

(2) Covering such in-kind social benefits as education, housing and medical benefits.

政府採取的措施對住戶收入重新分布的效應

REDISTRIBUTIVE EFFECTS OF GOVERNMENT INTERVENTION ON MONTHLY HOUSEHOLD INCOME

	2001	2006 HK\$	2011
平均原本住戶每月收入 Average Original Monthly Household Income	29,460 ↓ -5.9%	27,760 ↓ -6.5%	33,140 ↓ -6.8%
平均除稅後住戶每月收入 Average Post-tax Monthly Household Income	27,710 ↓ +5.3%	25,940 ↓ +4.6%	30,900 ↓ +4.0%
平均除稅及福利轉移後住戶每月收入 Average Post-tax Post-social Transfer Monthly Household Income	31,010	29,040	34,460

堅尼系數

GINI COEFFICIENT

- 堅尼系數是多為其他經濟體系用以分析收入差距的量數。

Gini Coefficient is a statistic commonly used by many economies to analyse income disparity.

- 堅尼系數的數值介乎0和1之間。堅尼系數的數值愈大反映差距程度愈大。

The value of Gini Coefficient ranges from 0 to 1. The higher the Gini Coefficient, the more the disparity it implies.

堅尼系數

GINI COEFFICIENT

	所有家庭住戶 All Domestic Households		
	2001	2006	2011
除稅及福利轉移後住戶每月收入 Post-tax post-social transfer monthly household income	0.470 (-0.055)	0.475 (-0.058)	0.475 (-0.062)
除稅後住戶每月收入 Post-tax monthly household income	0.515 (-0.010)	0.521 (-0.012)	0.521 (-0.016)
原本住戶每月收入 Original monthly household income	0.525	0.533	0.537

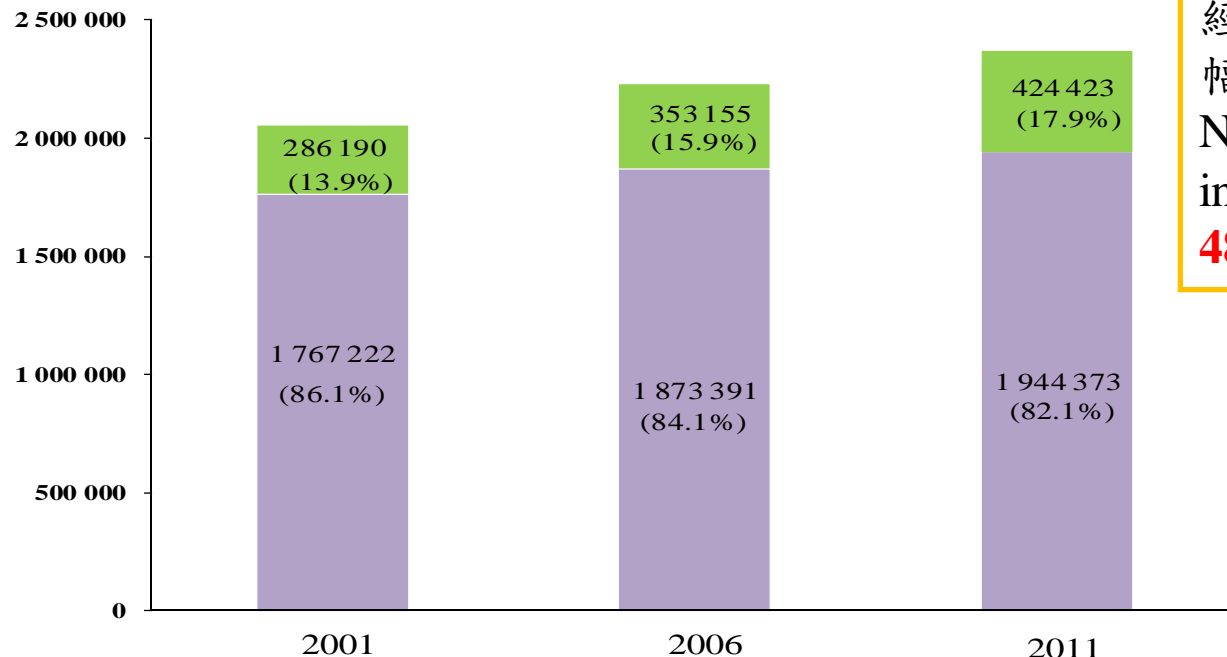
註：括號內的數字是相對按原本住戶收入計算的堅尼系數的減幅。

Note : Figures in brackets refer to reduction compared with Gini Coefficient based on original household income.

影響因素 - 人口老化

INTERVENING FACTORS – POPULATION AGEING

家庭住戶數目
No. of domestic households



在過去十年間，非從事經濟活動的家庭住戶大幅上升**48.3%**

No. of inactive households increased significantly by **48.3%** in the past decade

- 非從事經濟活動的家庭住戶
Economically inactive households
- 從事經濟活動的家庭住戶
Economically active households

非從事經濟活動的家庭住戶百分比
Proportion of Economically Inactive Households

十等分組別 Decile Group	2001	2006	2011
第一 (最低) 1st (lowest)	73.1%	77.6%	84.6%
第十 (最高) 10th (highest)	1.2%	2.1%	3.8%
所有家庭住戶 All Domestic Households	13.9%	15.9%	17.9%

影響因素 - 人口老化

INTERVENING FACTORS – POPULATION AGEING

- 非從事經濟活動的家庭住戶每月收入中位數*在2011年為4,320元，較全香港所有家庭住戶中位數的20,200元顯著為低

The median monthly income* of the economically inactive households was \$4,320 in 2011, much lower than \$20,200 for all domestic households

- 由於人口持續老化，非從事經濟活動的家庭住戶日益增加自然地會令收入差距擴闊

Because of population ageing, the increasing prominence of economically inactive households would naturally widen the overall income disparity in Hong Kong over time.

*：不包括外籍家庭傭工

*: Excluding foreign domestic helpers

堅尼系數

GINI COEFFICIENT

	從事經濟活動的家庭住戶 Economically Active Households		
	2001	2006	2011
除稅及福利轉移後住戶每月收入 Post-tax post-social transfer monthly household income	0.436 -	0.436 -0.006	0.430
除稅後住戶每月收入 Post-tax monthly household income	0.476 +0.001	0.477 -0.007	0.470
原本住戶每月收入 Original monthly household income	0.488 +0.002	0.490 -0.001	0.489

影響因素 - 小型住戶增加

INTERVENING FACTORS – INCREASING SMALL-SIZED HOUSEHOLDS

住戶人數 Household Size	2001	2006	2011
住戶平均人數 Average Household Size	3.1	3.0	2.9

堅尼系數

GINI COEFFICIENT

	所有家庭住戶 All Domestic Households			從事經濟活動的家庭住戶 Economically Active Households		
	2001	2006	2011	2001	2006	2011
除稅及福利轉移後住戶每月收入 Post-tax post-social transfer monthly household income	0.470 +0.005	0.475 -	0.475	0.436 -	0.436 -0.006	0.430
人口平均除稅及福利轉移後住戶 每月收入 Per Capita Post-tax post- social transfer monthly household income	0.421 +0.006	0.427 +0.004	0.431	0.412 -	0.412 +0.001	0.413

政府在二零一一年推行的一次性紓緩措施的影響

EFFECTS OF GOVERNMENT'S ONE-OFF RELIEF MEASURES IMPLEMENTED IN 2011

	堅尼系數 Gini Coefficient	
	所有家庭住戶 All Domestic Households	從事經濟活動的家庭住戶 Economically Active Households
人口平均除稅及福利轉移後住戶收入 Post-tax Post-social Transfer Per Capita Monthly Household Income	0.431	0.413
人口平均除稅及福利轉移後(包括政府一次性紓緩措施)住戶每月收入 Post-tax Post-social Transfer (Including Government's One-off Relief Measures) Per Capita Monthly Household Income	0.414 (-0.017)	0.399 (-0.014)

多謝!
THANK YOU!

